

# 交椅洲人工島 KAU YI CHAU ARTIFICIAL ISLANDS

深圳  
SHENZHEN

經十一號幹線及港深西部通道  
來往深圳  
Connect Shenzhen through Route 11  
and Kong Sham Western Highway

新界  
NEW TERRITORIES

連接至規劃中的十一號幹線  
(待另一項工程計劃研究)  
CONNECT TO PLANNED ROUTE 11  
[Under Separate Project]

連接至規劃中的青衣至大嶼山連接路  
(待另一項工程計劃研究)  
CONNECT TO PLANNED TSING YI - LANTAU LINK  
(Under Separate Project)

經青衣至大嶼山連接路來往九龍  
Connect Kowloon through Tsing Yi -  
Lantau Link

連接北大嶼山公路  
CONNECT TO NORTH LANTAU HIGHWAY

香港國際機場  
HONG KONG  
INTERNATIONAL  
AIRPORT

經北大嶼山公路來往香港國際機場及  
經港珠澳大橋來往珠海及澳門  
Connect Hong Kong International Airport  
through North Lantau Highway and connect  
Zhuhai and Macau through Hong  
Kong-Zhuhai-Macao Bridge

高架橋/隧道  
VIADUCTS AND/OR TUNNELS

高架橋  
VIADUCT

海底隧道  
SUB-SEA TUNNEL

於香港島接駁現有道路網絡  
CONNECT TO THE EXISTING ROAD  
NETWORK AT HONG KONG ISLAND

來往香港島  
Connect Hong Kong Island

大嶼山  
LANTAU ISLAND

交椅洲人工島  
KAU YI CHAU  
ARTIFICIAL ISLANDS

九龍  
KOWLOON

香港島  
HONG KONG ISLAND

## 圖例 LEGEND

- 現有、建造中及規劃中的主要幹道  
EXISTING MAJOR ROAD, MAJOR ROAD UNDER CONSTRUCTION  
AND MAJOR ROAD UNDER PLANNING
- ↔ 擬議港島西至大嶼山東北連接路  
PROPOSED HONG KONG ISLAND WEST - NORTHEAST LANTAU LINK
- ➡ 《跨越2030年的鐵路及主要幹道策略性研究》  
建議的主要幹道項目  
PROPOSED ROAD SCHEMES BY STRATEGIC STUDIES ON RAILWAY  
AND MAJOR ROADS BEYOND 2030

註：示意圖所顯示走線僅屬標示性質，只供參考並有待進一步研究。  
Remark: All alignments are indicative for reference only. They are subject to further studies.

深圳  
SHENZHEN

洪水橋  
HUNG SHUI KIU

港島西至洪水橋鐵路  
HONG KONG ISLAND WEST -  
HUNG SHUI KIU RAIL LINK

屯門東  
TUEN MUN EAST

香港國際機場  
HONG KONG  
INTERNATIONAL  
AIRPORT

欣澳  
SUNNY BAY

大嶼山  
LANTAU ISLAND

交椅洲人工島  
KAU YI CHAU  
ARTIFICIAL ISLANDS

新界  
NEW TERRITORIES

堅尼地城  
KENNEDY TOWN

香港大學  
HKU

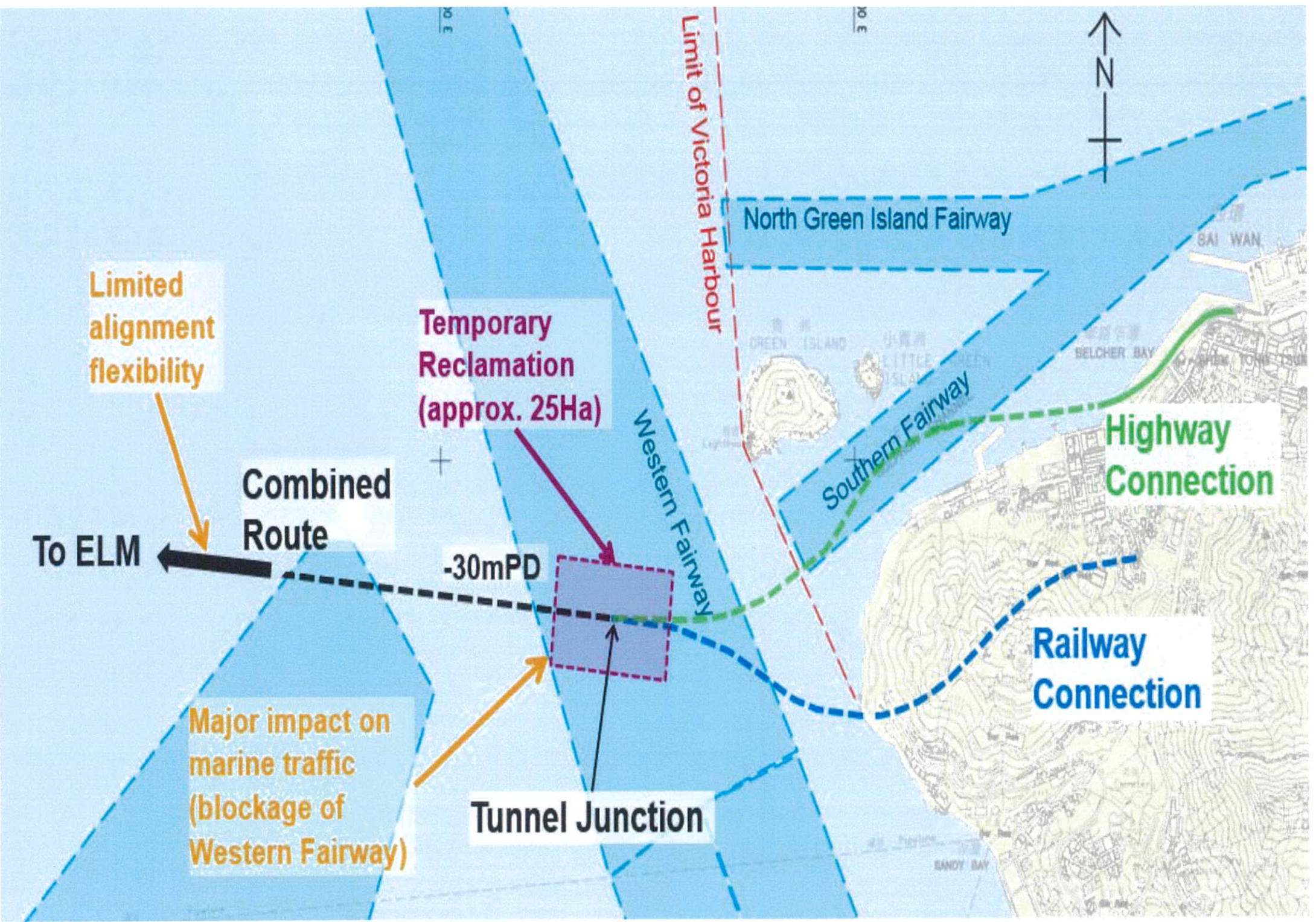
九龍  
KOWLOON

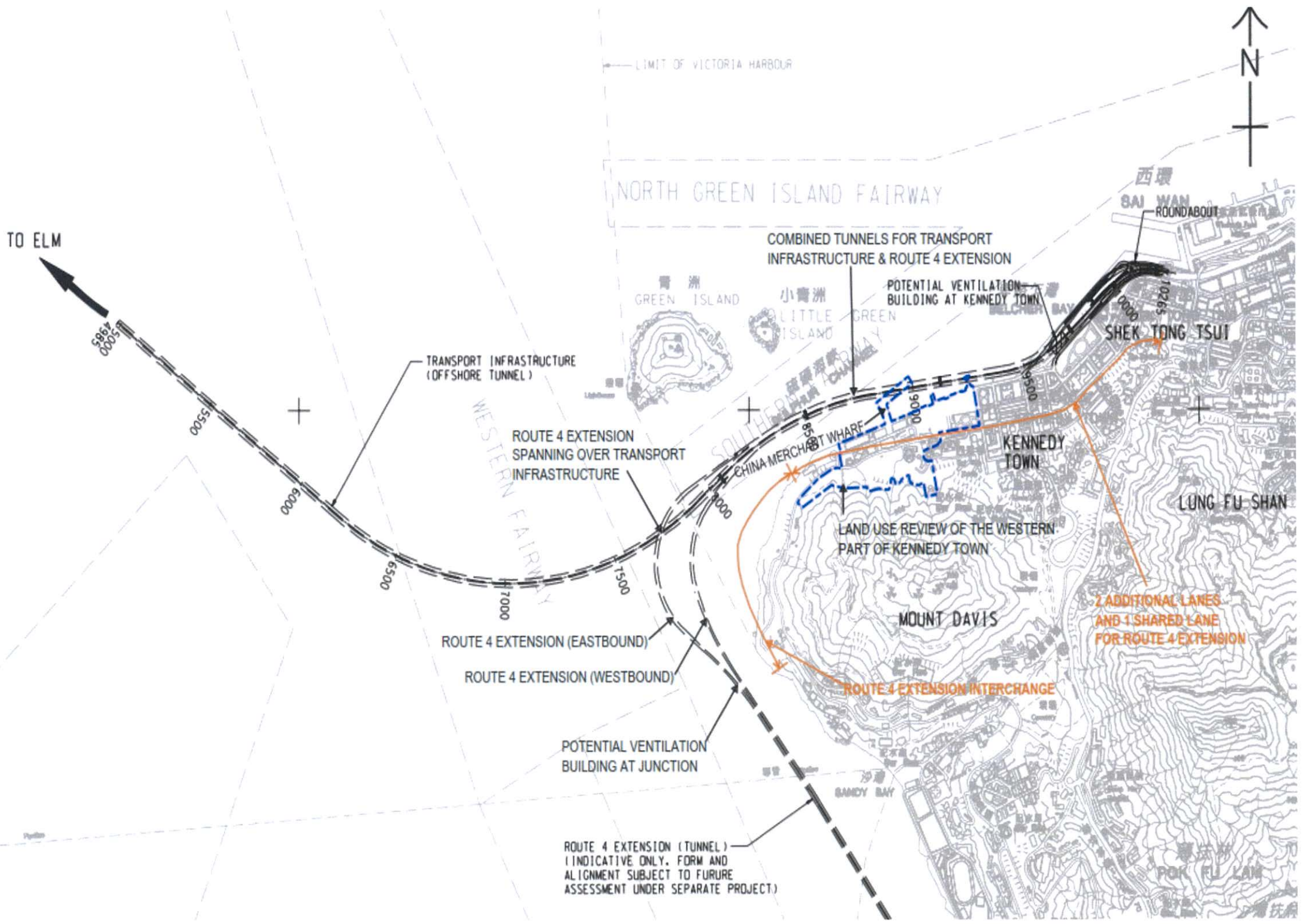
香港島  
HONG KONG ISLAND

圖例 LEGEND

- 現有及規劃中的鐵路  
EXISTING RAILWAY AND RAILWAY PROJECTS UNDER PLANNING
- 擬議港島西至洪水橋鐵路  
PROPOSED HONG KONG ISLAND WEST - HUNG SHUI KIU RAIL LINK
- 擬議港島西至洪水橋鐵路車廠  
PROPOSED DEPOT (HONG KONG ISLAND WEST - HUNG SHUI KIU RAIL LINK)
- 擬議環保集體運輸系統車廠  
PROPOSED DEPOT (GREEN MASS TRANSIT SYSTEM)
- 擬議交椅洲人工島上的環保集體運輸系統  
PROPOSED GREEN MASS TRANSIT SYSTEM ON KYCAI
- 《跨越2030年的鐵路及主要幹道策略性研究》建議的鐵路項目  
PROPOSED RAILWAY SCHEMES BY STRATEGIC STUDIES ON RAILWAY AND MAJOR ROADS BEYOND 2030

註：示意圖所顯示走線、車站及車廠僅屬標示性質，只供參考並有待進一步研究。  
Remark: All alignments, stations and depot locations are indicative for reference only. They are subject to further studies.





TO ELM

LIMIT OF VICTORIA HARBOUR

NORTH GREEN ISLAND FAIRWAY



COMBINED TUNNELS FOR TRANSPORT INFRASTRUCTURE & ROUTE 4 EXTENSION

POTENTIAL VENTILATION BUILDING AT KENNEDY TOWN

西環  
SAI WAN  
ROUNDABOUT

青洲  
GREEN ISLAND

小青洲  
LITTLE GREEN ISLAND

10265  
SHEK TONG TSUI

TRANSPORT INFRASTRUCTURE (OFFSHORE TUNNEL)

ROUTE 4 EXTENSION SPANNING OVER TRANSPORT INFRASTRUCTURE

CHINA MERCHANT WHARF

KENNEDY TOWN

LUNG FU SHAN

LAND USE REVIEW OF THE WESTERN PART OF KENNEDY TOWN

MOUNT DAVIS

2 ADDITIONAL LANES AND 1 SHARED LANE FOR ROUTE 4 EXTENSION

ROUTE 4 EXTENSION (EASTBOUND)

ROUTE 4 EXTENSION (WESTBOUND)

ROUTE 4 EXTENSION INTERCHANGE

POTENTIAL VENTILATION BUILDING AT JUNCTION

BANDY BAY

ROUTE 4 EXTENSION (TUNNEL) (INDICATIVE ONLY. FORM AND ALIGNMENT SUBJECT TO FUTURE ASSESSMENT UNDER SEPARATE PROJECT)

POR FU LAM



LIMIT OF VICTORIA HARBOUR

ALTERNATIVE ROUTES OF  
TRANSPORT INFRASTRUCTURE

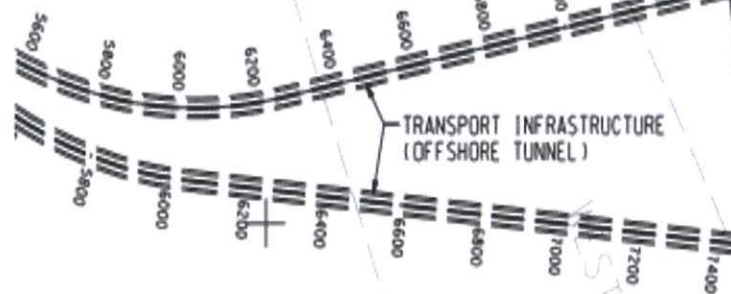
NORTH GREEN ISLAND FAIRWAY

NORTH ALIGNMENT

POTENTIAL VENTILATION ADIT  
POTENTIAL VENTILATION  
BUILDING AT KENNEDY TOWN

西環  
SAI WAN  
ROUNDABOUT

TO ELM



TRANSPORT INFRASTRUCTURE  
(OFFSHORE TUNNEL)

SOUTH ALIGNMENT  
POTENTIAL VENTILATION  
BUILDING AT GREEN ISLAND

GREEN ISLAND  
LITTLE GREEN ISLAND

CHINA MERCHANT WHARF

KENNEDY TOWN

SHEK TONG TSUI

WESTERN FAIRWAY

LAND USE REVIEW OF THE WESTERN  
PART OF KENNEDY TOWN

LUNG FU SHAN

ISLAND WEST  
TRANSFER STATION

MOUNT DAVIS

ROUTE 4 EXTENSION (BRIDGE)  
(INDICATIVE ONLY, FORM AND  
ALIGNMENT SUBJECT TO FUTURE  
ASSESSMENT UNDER SEPARATE  
PROJECT)

BANDY

